

## Water-Baths with Timer

### High-grade steel baths with volumes from 1 to 80 litres



water bath WBT 6  
with inclined high-grade steel cover



water bath WBT 22  
with inclined high-grade steel cover



water bath WBT 12 with inclined cover,  
additional flat cover and water bath rings

Specifications		WBT 1	WBT 6	WBT 12	WBT 22	WBT 50	WBT 80
admissible ambient temp.	°C	1...40	1...40	1...40	1...40	1...40	1...40
working temperature range	°C	25...100	25...100	25...100	25...100	25...100	25...100
temperature stability	K	± 0,2	± 0,2	± 0,2	± 0,2	± 0,2	± 0,2
temperature homogeneity	K	< 0,5	< 0,5	< 0,5	< 0,5	< 0,5	< 0,5
heating time (from 20 to 70°C)	min/l	<7,8	<4,5	<2,8	<1,8	<1,8	<1,6
bath volume	l	1 - 2	2 - 6	4 - 12	6 - 22	15 - 50	20 - 80
bath opening	mm	D = 130	215 x 230	390 x 230	455 x 230	500 x 250	620 x 420
bath depth	mm	120	120	120	170	360	300
temperature display		LED	LED	LED	LED	LED	LED
resolution	K	1	1	1	1	1	1
temperature setting		digital	digital	digital	digital	Digital	digital
resolution		1	1	1	1	1	1
safety class		1	1	1	1	1	1
heat power	KW	0,7	1,0	1,6	2,0		2,6
power supply	V/Hz	230/50	230/50	230/50	230/50	230/50	230/50
dimensions (wxdxh)	cm	23x24x22	32x34x26	49x34x26	57x34x31	60x36x46	73x53x45
weight ca.	kg	5	7,5	10	12,5	21	33

#### Temperature Controller:

Micro-processor-controlled PID-regulator, three fixed temperatures adjustable, adjustable lower and upper set point limit, adjustable button locking, limiting value of alarm visual and/or acoustic, alarm function can be switched off, alarm of temperature sensor can not be switched off, temperature setting in Celsius or Fahrenheit:

#### Timer:

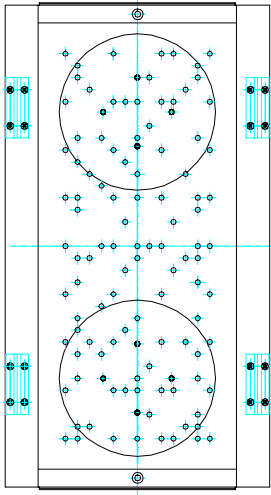
Three fixed times adjustable, timer adjustable within 0 - 99,99 minutes

#### Safety Function:

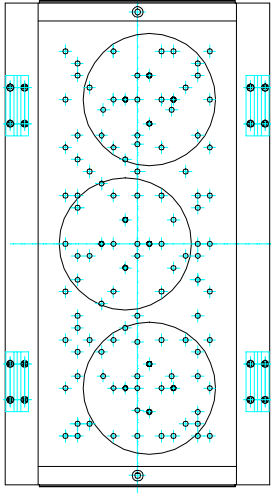
dry-going-protection integrated in the heater

#### Outlet:

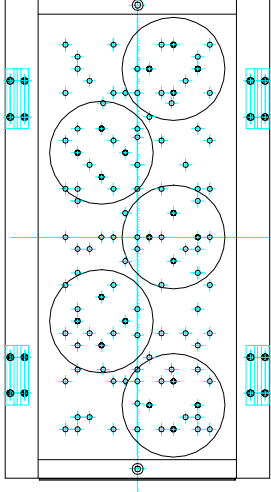
With seal screw / drain cock possible



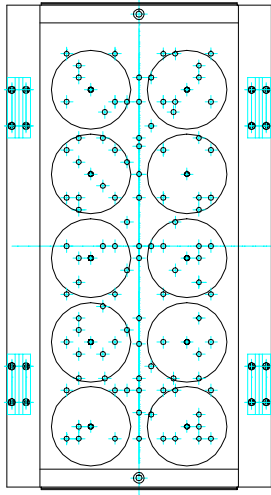
montage of 2 pieces holding clamp  
for 1000 ml piston



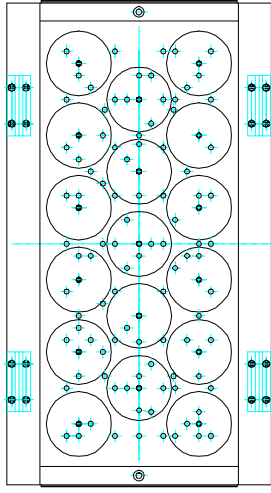
montage of 3 pieces holding clamp  
for 500 ml piston



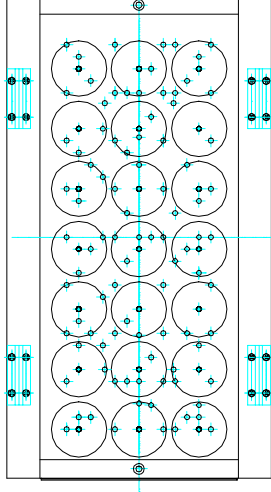
montage of 5 pieces holding clamp  
for 250 ml piston



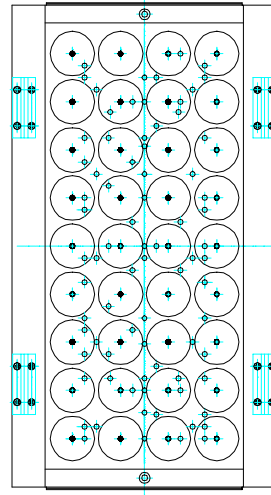
montage of 10 pieces holding clamp  
for 100 ml piston



montage of 17 pieces holding clamp  
for 50 ml piston



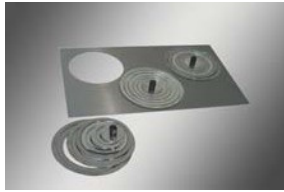
montage of 21 pieces holding clamp  
for 25 ml piston



montage of 36 pieces holding clamp  
for 10 ml piston

Face plan shake basket  
SWB 20 – 3296.2.571 00

## Accessories for water baths



Flat cover with waterbath-rings



Spring clamps for Erlenmeyer-flasks



Drain cock

Order-No.	Type	Description / features	Application
3295.2.251 00	BD 1	Round flat cover	WBT 1
3295.3.510 01	FL 6-1	Flat cover 6, 1 opening D=130mm	WBT 6
3295.3.510 05	FL 6-2	Flat cover 6, 2 openings D= 92mm	WBT 6
3295.3.510 02	FL 12-3	Flat cover 12, 3 openings D=130mm	WBT 12
3295.3.510 06	FL 12-6	Flat cover 12, 6 openings D= 92mm	WBT 12
3295.3.510 03	FL 22-3	Flachdeckel 22, 3 openings D=130mm	WBT 22
3295.3.510 07	FL 22-8	Flat cover 22, 8 openings D= 92mm	WBT 22
3295.2.818 00	WR 130	Water bath rings, 6-piece, D=130mm	1)
3295.2.819 00	WR 92	Water bath rings, 4-piece, D= 92mm	2)
3295.2.255 00	KR 1	Level controller	WBT 6-22
3360.2.856 00	AH	Drain cock, complete	3)
M 11896	FK 10	Holding clamp for Erlenmeyer flasks 10ml	SKF 20
M 11897	FK 25	Holding clamp for Erlenmeyer flasks 25ml	SKF 20
M 11898	FK 50	Holding clamp for Erlenmeyer flasks 50ml	SKF 20
M 11899	FK 100	Holding clamp for Erlenmeyer flasks 100ml	SKF 20
M 11900	FK 250	Holding clamp for Erlenmeyer flasks 250ml	SKF 20
M 11901	FK 500	Holding clamp for Erlenmeyer flasks 500ml	SKF 20
M 11902	FK 1000	Holding clamp for Erlenmeyer flasks 1000ml	SKF 20
3296.2.570 00	SKR 20	Basket for max. 4 test tube racks	SWB 20
3296.2.571 00	SKF 20	Basket for holding clamps for Erlenmeyer flasks	SWB 20

1) WBT 1, FL6-1; 12-3; 22-3

2) FL 6-2; 12-6; 22-8

3) WBT 1 to WBT 80 and SWB 20

### Liquid Additive ThermoClean (concentrate)

Liquid-Additive for water baths and thermostats to prevent algae- and bacteria growth

Application: 2ml for 1,0 litre water (water stability 1 month)

Order-No.	Type	Description / features
M 11970	TC 100	ThermoClean 100ml
M 11971	TC 500	ThermoClean 500ml
M 11972	TC 5000	ThermoClean 5000ml
M 11973	TC 10	ThermoClean 10ml

## Test Tube Racks for water baths

### Test Tube Racks round

for Water bath WBT 1 and  
for devices with flat cover



3295.2.xxx xx

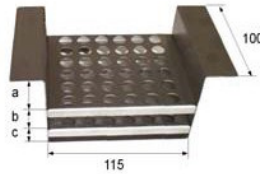
Order N°	Type	Dimensions in mm		Capacity for Tubes		Max. quantity of racks per device or flat cover 3295.3			
		a	b	pcs.	max. Ø	WBT 1	WBT 6 ..510 01	WBT 12 ..510 02	WBT 22 ..510 03
3295.2.240 00	RGR 8.10,5	20	30	36	10,5	1	1	3	3
3295.2.242 00	RGR 8.11,5	15	20	36	11,5	1	1	3	3
3295.2.244 00	RGR 8.14,5	50	30	24	14,5	1	1	3	3
3295.2.246 00	RGR 8.18,5	50	30	16	18,5	1	1	3	3
3295.2.247 00	RGR 8.32	50	30	6	32	1	1	3	3

### Test Tube Racks Standard

for Water Bath WBT 6 - 22 and for Shaking Water Bath SWB 20



WBT 6 WBT 22



3370.2.xxx xx  
SWB 20

Order N°	Type	Dimensions in mm			Capacity for Tubes		Max. quantity of racks per device			
		a	b	c	pcs.	max.Ø	WBT 6	WBT 12	WBT 22	SWB 20
3295.2.391 00	RG 8.10,5	20	30	60	56	10,5	3	5	6	
3295.2.394 00	RG 8.11,5	15	20	75	56	11,5	3	5	6	
3295.2.392 00	RG 8.14,5	50	30	30	33	14,5	3	5	6	
3295.2.393 00	RG 8.18,5	50	30	30	18	18,5	3	5	6	
3295.2.395 00	RG 8.32	50	30	30	6	32	3	5	6	
3295.2.396 00	RG 8.49	30	30	30	3	49	3	5	6	
3295.2.397 00	RG 8.58	60	30	30	3	58	3	5	6	
3370.2.201 00	RG18,5	33	25	17	20	18,5				4
3370.2.202 00	RG 13,5	48	25	17	36	13,5				4
3370.2.203 00	RG 11,5	33	25	17	36	11,5				4
3370.2.204 00	RG 32	35	65	20	5	32				4
3370.2.206 00	RG 18/tief	35	65	20	20	18				4